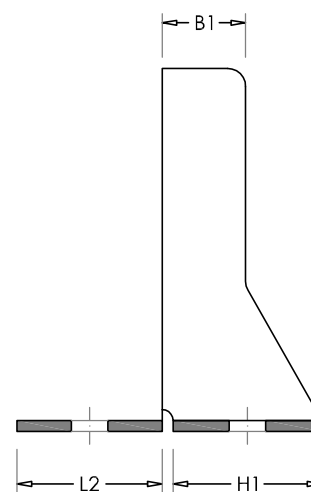
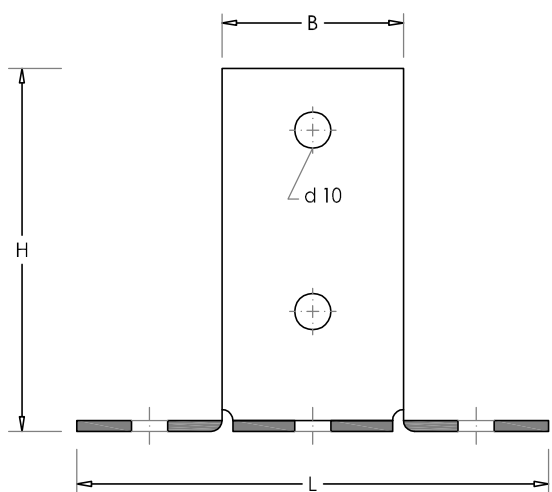
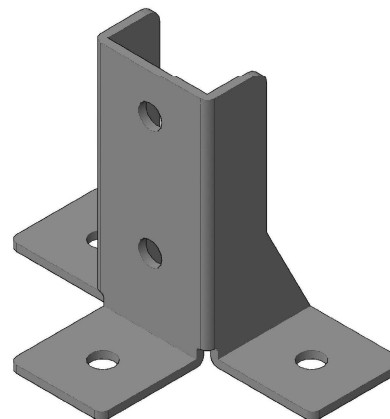
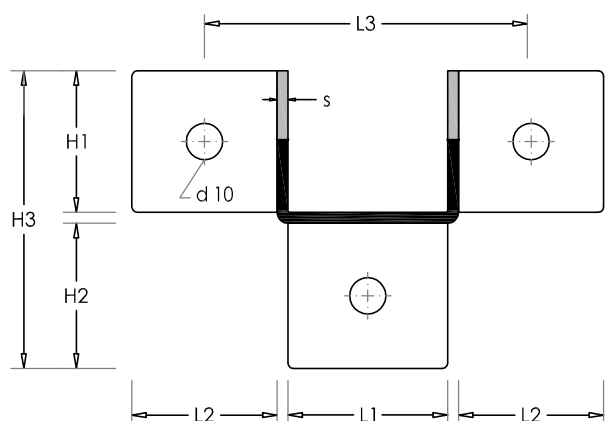


Rev.	Descrizione	Disegnato	Data disegno
			01.2017
			Nome file
			\SAS21LC
0	-	D.S.	Foglio 1

Dati Tecnici / Technical data

Marchio di fabbrica / Trade mark



Descrizione:

STAFFA DI ANCORAGGIO A SOFFITTO PER PROFILO OMEGA 41x21

- In acciaio zincato a caldo dopo lavorazione (EN1461)
- Spessore 3 mm

Description:

Reinforced ceiling bracket for omega profile 41x21

- Hot-dip galvanization (EN1461)
- Thickness 3 mm

codice code C	H mm	H1 mm	H2 mm	H3 mm	B mm	B1 mm	L mm	L1 mm	L2 mm	L3 mm	Portata Kg Capacity Kg C
SAS21LC	100	42	40	82	50	23	130	44	40	90	0.318